

Biochemistry & Molecular Biology

MICHIGAN STATE UNIVERSITY

You know you are a biochemist if...

- You are drawn to proposing, testing, knowing the *molecular mechanisms* of biological processes.
- You can think about biological phenomena in terms of *chemical processes*.
- You seek knowledge of biological systems using structural, genetic, molecular biological, biophysical, genomic and computational tools.

BMB Departmental Seminars:

Thursdays at 11:00 a.m., room 101

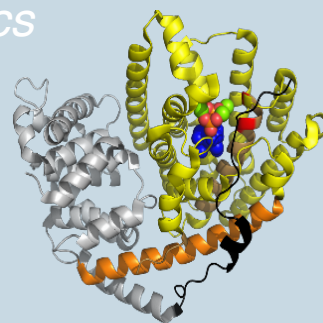
Featuring research by internationally recognized scientists in life sciences.



Continuing fall 2019, BMB will feature “The Exchange”, a unique weekly meeting featuring student-driven journal presentations linked to our seminar series, as well as professional training, career perspectives and more. Free light breakfast; open to all BMB-associated graduate students. Meets Tuesdays in BMB 208 from 8 -9 a.m.

Core Research Areas

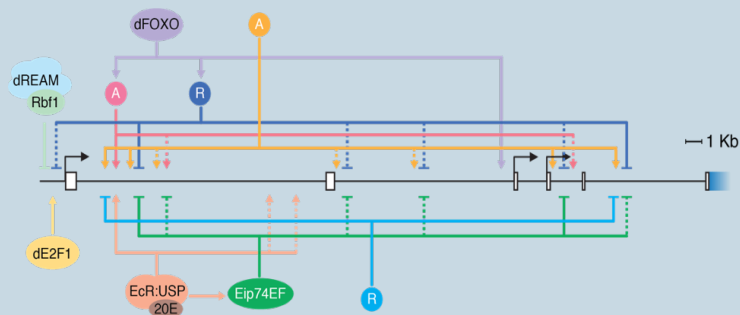
Protein Structure & Molecular Biophysics



Plant Biochemistry



Genes and Cellular Regulation





- 52 full-time research faculty members
- 6 endowed chair professors
- 4 University Distinguished Professors
- 6 MSU Distinguished Faculty Awardees

Typical coursework and training

1st year: Fall Semester

BMB 801 Molecular Biology
BMB 829 Biochemical Methods
rotations, RCR training, BMB 978

Spring Semester

BMB 805 Protein Structure and Mechanism
selection of laboratory for thesis research
BMB 978 (4 times total)

2nd year:

TA experience, BMB 471, 472, or other
form and meet with thesis committee
qualifying examination at end of 2nd or beginning of 3rd year

3rd year – 5th year:

elective courses, graduate seminars, annual thesis committee meetings

For more information, contact our program representatives



David Arnosti
Director
413A Biochemistry
arnosti@msu.edu
517-432-5504



Jessica Lawrence
Graduate Secretary
212 Biochemistry
bmbgrad@msu.edu
517-353-0807



Quynh Duong
duongqu1@msu.edu



Tom Dixon
dixonth1@msu.edu

BMB Council Co-chairs

bmb.natsci.msu.edu/graduate-program